

Community VOICE

SUMMER 2026

Welcome to Summer!

**DANCE
YOURSELF
FIT!** See page 7

SAVE THE DATE, SEE PAGE 6 >>>

GIG in ^{12-7pm}
the PARK
Sun 30 Aug 2026
WHITWORTH PARK, DARLEY DALE

LIVE MI

WELCOME...

Summer has finally arrived, and it's been a particularly busy quarter in the Town Clerk's Office. Much of our work has centred on the Local Plan Review 2026, which will decide where and how much of Darley Dale is turned into housing over the next few years. You can find a summary of recent activity on page 12. We will also be producing a special edition of Community Voice in July, dedicated entirely to the Local Plan Review, so residents can stay fully informed about what is happening and what it means for Darley Dale. Thank you to everyone that completed the two surveys (Flooding and New Housing Development) we issued, your responses were vital in gathering evidence for our work on the Local Plan.

This quarter we were pleased to award grants to several local groups: Memory Lane Darley Dale, St Helen's Church, Darley Dale Twinning and Darley Dale Cricket Club – all of whom continue to contribute so much to our community.

In March, we were delighted to see the installation of new play equipment at the Tippin recreational park, which has already proved extremely popular with families and visitors. Funding has come from section 106 housing developers' contributions for play areas, which was split between new equipment in Whitworth Park and the play area at the Broadwalk. The planning application for the climbing wall in Whitworth Park has now gone in, and all being well we should know by August if this has been approved before we begin applying for funding.

We're excited to share that we've been developing a series of walking routes around Darley Dale - designed for residents and visitors to enjoy our beautiful landscapes, heritage and hidden corners.

These routes celebrate the best of our town and make it easier for everyone to get out, explore and stay active. Each walk has been carefully put together with clear directions, local points of interest, and options for different abilities. Hopefully by the time this issue of Community Voice is available we will have 2/3 walks ready - perfect timing as the days get longer and the countryside comes alive. Whether you're a seasoned walker or just fancy a gentle wander, there'll be something for you.

YOUR TOWN COUNCILLORS ARE:

Jason Farmer (Chair/Mayor)
Carol Taylor
Dave Chapman
David Hood

Dave Oakley
David Parkes
David Wheeler

James Wilson
John Mordue
Julie Bishop

Town Clerk Team: Jason Hedley, Ian Adkin & Sarah Rivett
T: 01629 735248 E: townclerk@darleydale.gov.uk

INCREASE IN LOCAL PROJECTS FUND

Your three Derbyshire Dales District Councillors are pleased to announce that there is now an increased pot of money they are able to help award to local projects that benefit the community in Darley Dale.

Councillors David Burton, Marilyn Franks and Roger Shelley will now each have £2,000 to distribute annually (double the amount of the previous year). The minimum that can be awarded to each applicant is £100 and the maximum is £1,000.



The funds must be used for one off projects, ongoing activities or the development of sustainable longer term projects. Examples of the kind of projects supported include;

- funding towards village hall improvements
- sports equipment & kit-staging events, activities for the elderly & isolated
- arts projects
- environmental & heritage projects
- youth based activities in Darley Dale

In Darley Dale the fund has supported a wide variety of projects, including the Darley Pre-School group, the Croquet Club, the seated exercise class and The Whitworth Boiler Appeal.

Cllr Roger Shelley said 'This increase is a recognition of the hard times that we live in, the impact of inflation on many activities, and the sheer good value and importance to peoples' lives that these small grants make'.

Applications should be made online direct to Derbyshire Dales District Council.

Securing the Future of Our Community Car Park

As many of you know, Darley Dale Town Council purchased the car park on Station Road, near Darley Dale Cricket Club jointly with the Derby Railway Angling Club in spring 2024 to secure its future as a car park for the community. To help cover ongoing maintenance costs, we have now introduced a voluntary payment system - please donate generously!



Darley Dale Cricket Club

There have been some changes to the club organisation over the winter with the most significant being the stepping down of Stuart Rudkin as Junior Co-ordinator. Stuart has worked tirelessly over many years in this role and has had considerable success with many teams involving a large number of children. He has also been instrumental in introducing and organising the ECB programmes, All Stars and Dynamos, at the club. The success of these initiatives is already helping to grow our Junior section, with the aim of developing young players who will progress into adult cricket.



We have a number of new people involved in working with the Juniors and this year will be entering teams at U11, U13 and U15. The U9 team playing as Dynamos will be largely playing local games at Darley.

Charlotte Horton will be re-energising the Women and Girls groups and they will be taking part in Festivals around the County. We have also appointed Dave Hartley, a Level 3 coach, as the Club Coach.

All this means that we are now having a Club Night on Friday evenings. Junior coaching will take place for the U11's, U12's and U15's. Charlotte will be working with the Women and Girls groups and the Dynamos will be suitably busy. The bar will be open and we are all looking forward to this being a really enjoyable evening.

Another significant development this winter has been the engagement of 2 major sponsors, Lovedays Solicitors and Darwin Forest Holidays. Both businesses have donated very generously to the club. As a result, the Senior League Teams will be wearing shirts with the Lovedays logo on them. All the Juniors and Women and Girls Teams will be wearing coloured kits with the Darwin Forest Holidays logo. We do appreciate their support.

Darley Dale Town Council recently awarded us £1,162.80 to purchase a new bowling machine, and it's already proving to be a fantastic addition to the club. This investment will make a real difference to our training sessions, helping players of all ages develop their skills and giving our coaches more opportunities to run high quality practice drills.

Other sponsors include Shrey Sports, Milner Off Road, Coates Butchers, Peakside Physiotherapy, Village Cricket Co, Peak Fly Fishing, CPP Waste and Recycling, BJW Transport and Lumsdale Glass.

TOWN COUNCIL GRANT HELPS MEMORY LANE THRIVE

Memory Lane Darley Dale received £1,000 from Darley Dale Town Council earlier in April. A big thank you from our long standing,



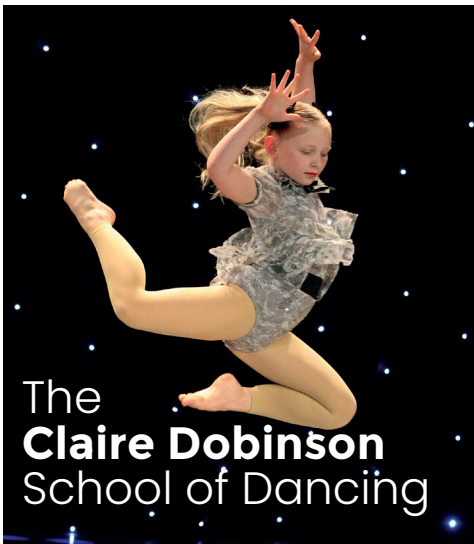
ever growing community group of 18 years. The grant will help enable us to keep meeting on a monthly basis which is always a Saturday. Memory Lane gets together at The Whitworth, Under Hall and St Helens Church over the year to have a cuppa and watch various entertainment.

It's an open door to all in the community and surrounding areas and is an opportunity to make new friends and go out on short trips along with an end of year Christmas Community Concert.

Memory Lane started in 2007 with community volunteers and Darley Dale Town Council at the time. The support given with this grant will enable the groups ongoing future.

THANK YOU!

For further information about Memory Lane Darley Dale, please call 07919 116585



The
Claire Dobinson
School of Dancing

is celebrating over 25 years of dance tuition in Darley Dale. The dancers performed a brand new full school showcase over two days at the beautiful Buxton Opera House in April, in front of hundreds of people.

Claire took over the dance school from her teacher Elizabeth Chamberlain in 2000 at the age of 21 and has gone on to qualify with the National Association of Teachers of Dancing to Fellowship level and is now a multi-genre Examiner of ten different dance styles. She is also the Senior Contemporary Dance Examiner for the NATD and Chair of the North Midland Theatrical Area. Claire was appointed as a Director of the NATD this year, which is a huge achievement and honour.

Dancers from the Claire Dobinson School of Dancing have performed worldwide, gaining places for full time training at the top performing arts and ballet schools in the country. The dance school has excellent examination results which can count towards UCAS points for Universities. With fun filled classes for children as young as 2 and a half, right through to adults and vocational/professional training, local dancers can find a love of dancing in a caring and professional environment.

The Claire Dobinson School of Dancing offers lessons in NATD Ballet, Tap, Modern, Contemporary, Gymnastic Dance, Street and Musical Theatre from their beautiful former Chapel, Dale Road North, Darley Dale. Start your dance journey today, who knows where it may take you!

clairedobinsonschoolofdancing.co.uk

Action Planned to Protect Ancient Yew Tree

Derbyshire Dales District Council is to undertake sensitive pruning with the aim of halting recent structural deterioration of Darley Dale's famous yew tree, close to the main entrance to St. Helen's Church. The tree, reputed to be up to 2,000 years old, is located in a closed churchyard managed by the District Council.



Believed to be older than the church itself, the ancient tree is listed as a tree of historical significance nationally. It is subject to a Tree Preservation Order (TPO), and Derbyshire County Council, which is responsible for administering this particular TPO, has given permission for the works.

At a recent inspection, District Council Trees Officers identified several recently opened cracks, which indicated movement in the northern stem of the yew. As an immediate precaution, the footpath beside the tree was fenced off to prevent people walking beneath the part of the tree concerned.

Two independent inspections from Veteran Tree Specialist consultants were promptly commissioned by the District Council. Both inspection reports recommended reducing the length of relatively young branches to reduce end weight and wind loading to the northern stem. These branches are growing from the top of the northern stem, which shows evidence of having been reduced in height many years earlier, probably responding to previous structural concerns or storm damage.

A lighter pruning of the southern stem was also recommended to manage its canopy size. This aims to prevent potential structural damage to this stem because it was found to have only a very thin remaining thickness of sound undecayed wood, likely compromising strength.

The pruning specification is for:

- reduction of upper reaches of branches growing from the northern stem by no more than 3m,
- reduction of upper reaches of branches growing from the southern stem by no more than 1m, and
- reduction of the northern stem's lower crown lateral branches by no more than 0.5m with no pruning cuts greater than 30mm diameter.

DARLEY DALE IN BLOOM

Encouraging wildlife and biodiversity by Christine Goldsack

As I write this we are fascinated watching David Attenborough's marvellous new series, Secret Garden, as no doubt many of you are. The magnificent camerawork to bring these images of what is happening very near us, in our own gardens, enlivened by David's perceptive and often witty commentary, are a joy when there is so much that is deeply depressing going on in this country and the wider world. What a wonderful centenarian David is!

Last year the Britain in Bloom judges, who visited the Swale area at St Elphin's Park as part of their route judging our efforts, awarded an engraved rose bowl to the retirement village as 'The best example of conservation and biodiversity in the East Midlands.' This area is humming with insect life; wildflowers and grasses now flourish on the poor, thin soil of what for ten years was a building site; frogs, toads and newts spawn in the swale itself where fish added to the water by two owners have grown and multiply among the waterlilies, wild iris and rushes. Over the years some of our neighbours here have helped this process along, lifting invertebrates whose journey towards the swale has been interrupted by falling down a drain cover, out into a bucket with a small fishing net or old ladle and taking them to the edge of the swale safely. Just outside Matlock volunteers have helped similarly more than a thousand toads to cross roads this season. Numbers are in serious decline; amphibians such as toads need good, fairly deep, breeding pools with clean, clear water and surrounded by plenty of insect-rich rough grassland, woodland, wetlands and gardens. Our swale area is ideal.

This spring our team has been working to improve our Display Garden in the Park, including stripping one large raised bed to create a woodland garden with many wildflowers. We hope you have enjoyed the narcissi donated and planted in the autumn throughout Darley Dale; these have now been dead-headed and sprinkled with Growmore to ensure the bulbs have maximum nutrition as the foliage dies back, so multiply in the years to come. Meanwhile my husband Alan has been planting and potting on Cosmos to create again the wonderful white mass of scented flowers in the Onzain bed which was so admired last year.

We're very disappointed to see the damage done by contractors to an already untidy grass and seating area at the junction of Station Road and the A6 and have submitted plans to Derbyshire Dales District Council to create an attractive raised floral bed to replace the damaged area. The Town Council are also exploring options to prevent cars and lorries from driving on the edges of the space causing unsightly ruts and more damage.



Finally, we have welcomed four new recruits to our volunteer team, making good use of the tools purchased with our Better Derbyshire Dales grant; and some recent generous donations and the financial support of Darley Dale Town Council are helping us to constantly improve the service we provide to this lovely community.

ALL OCCASSIONS CATERING AND EVENT SUPPLIERS



OUR SERVICES:

Elevate Your Event with our Affordable Quality Catering. Taste the Difference, Experience the Perfection

- Weddings
- Corporate Events
- Celebrations
- Wakes / Services
- Special occasion Cakes
- Home-made Quiches
- Buffets
- Tray Bakes

Find us on Facebook:
All occasions catering and event suppliers

Contact Us :

07908120579

make

FREE!

We meet EVERY TUESDAY MORNING in term time in the Library at The Whitworth, from 10:30am - 12:30pm.

DO YOU LOVE TO BE CREATIVE AND WANT TO MEET NEW PEOPLE IN A RELAXED SETTING?

MAKE are a creative group. Come and make things, have a cup of coffee and meet new people. Everyone is welcome!

Do I need to be a 'crafter'? No. We will guide you through every step of each process.
Do I have to attend every week? No. We would love to see you whenever you can make it.

We make everything from paper crafts, clay work, painting and stitching. You name it, we've probably had a go!



greenrewards

Join over 600 residents already signed up, and be one of 3 winners of £20 vouchers given away every month!

Log sustainable habits

Win £20 vouchers

Compete with friends

Make an impact

Sign up and bookmark derbyshire.greenrewards.co.uk

or scan to download



Get Involved in the Community Garden

A large section of the Community Garden at Church Road is now being lovingly cared for by a group of local residents. If you'd like to meet new people, share your gardening know how, or simply enjoy being outdoors together, you're very welcome to join the group. To get involved, contact Steve Walker on 07827 012480.

Silver Jewellery Making Classes

Make and take home your own solid silver jewellery in just one day at the Whitworth!



10am - 4pm £105 per person - price includes silver and basic extras

For more info, dates and to book visit

www.rockpapersilver.co.uk

or call Rebecca on 07595637363



VOLUNTEER NEEDED



We are seeking a Befriending volunteer in Darley Dale. Ideally, the volunteer will have a farming background or lived experience of rural life, as this shared understanding would help build a meaningful connection. The role would suit someone who is caring, a good listener, and dependable, with a few hours to spare each month. If you are interested in giving your time and making a positive impact in your local rural community, we would love to hear from you.



The Farming Life Centre

donna@thefarminglifecentre.org.uk

07777 168 857



The Whitworth

GIG in the PARK

12-7pm
Sun 30 Aug 2026

WHITWORTH PARK, DARLEY DALE

LIVE MUSIC

FOOD TRUCKS & BAR

BOUNCY CASTLES

LIVE MUSIC INCLUDING:

Cassiopeia

Mark Knight

3:Second:Fuse

Yeah Ducks

John Frusciante Tribute

Rivers

Compered by:
Darley Dale Community Radio

Darley Dale
Town Council





Darley Dale TWINNING

Twinned with Onzain, France



At the time of writing this, it's been a busy spring as we continued to prepare for our upcoming visit to Onzain in mid-May. Members of the Fishpond Choir and Winsters Morris will form the nucleus of the 65 people travelling to Onzain, including Darley Dale's Mayor, Jason Farmer, with the rest of the places filled by members of the community. The Fishpond Choir are invited to take part in a 3-way concert, along with choirs from Onzain and the German town of Flein, so that should be a very spectacular performance! No doubt there will be plenty of other activities over the weekend for our group to enjoy.

Local artist, Carol Hill completed a new painting, showcasing one of the iconic views of Darley Dale looking through the trees in the park up to The Whitworth building. Carol was commissioned by the Darley Dale Twinning group to paint a view of Darley Dale that would be suitable for using as a gift for the French people hosting the visit to Onzain. Carol has very generously donated the original painting as a gift to be presented to the former president of the Onzain Jumelage committee. Whilst a framed copy will be given to the current Mayor as a gift from Darley Dale Town Council to commemorate the ongoing Twinning links Darley Dale has with Onzain. Others who are staying with French families will be giving signed limited edition prints of the picture to individual hosts as a gift for their stay.

Our Valentine's Day themed prize draw was a great success. The winner of the case of mixed premium wine was Angela Hadfield after her ticket was drawn out of the hat by Darley Dale's Mayor. With almost all the 200 tickets sold, the Twinning group's chairman, David Tidd, said how pleased he was with the success of the draw and over £500 surplus that would help our group with the funding of its projects.

The "Roulons avec les flammes européennes du cœur pour sauver des Vies" youth cycling project continues to gather momentum, and we are pleased to be supporting a young rider from our area as they take part. There is even the exciting prospect of Darley Dale hosting the event in 2028. To help make this opportunity possible, Darley Dale Town Council has kindly donated £150 towards the rider's travel costs for the four day challenge in August this year.

Our AGM will be held at the scout hut in Darley Churchtown on Wednesday 24th June at 8:15pm. Beforehand we will be

An evening of;
Wine Tasting, Tapas &
Live Music

Tickets £49

Date - 10th July 2026

Wine tasting with live music, tapas plates, fresh bread & oils - limited availability - with the renowned Hattersley Wine's

Get your tickets on our website
www.thewhitworth.org,
the Whitworth office or Terrace cafe

Tapas Menu

meat option:
FRESH BREADS & OIL
CHORIZO & HONEY
FETA, RED ONION SALAD
CHICKEN IN A RED WINE JUS
DULCE DE LECHE CHEESECAKE

vegetarian option:
FRESH BREADS & OIL
HALLOUMI & HONEY
FETA, RED ONION SALAD
SWEET POTATO IN A RED WINE JUS
DULCE DE LECHE CHEESECAKE

Complemented by five expertly selected wines



Dance Yourself Fit!

NEW WEEKLY SOLO
BALLROOM & LATIN DANCE CLASS!

Starting WEDNESDAY 6th May • 7PM - 7:45PM

Launch Class **ONLY £1!**
Wednesday 6th May

- ✓ No partner needed
- ✓ No experience needed
- ✓ £8 pay as you go

- ★ Ballroom
- ★ Latin
- ★ Salsa
- ★ Argentine Tango

Taught by Jenny, an experienced Ballroom & Latin and former Zumba & Fitsteps instructor!

VENUE: The Whitworth Centre Darley Dale

For more information contact Jenny
07734914327
Info@sheerdance.uk
www.sheerdance.uk

working with the Scouts to make delicious homemade, wood fired pizzas, so there should be plenty for all to enjoy. Get there early, this is your chance to have your say, share your ideas, or just get a better idea of what Twinning involves.

For more information, please contact our Secretary, Nadine:
nadine.snowsill@darleydaletwinning.org.uk

platform

housing group

COULD YOU HELP PEOPLE LEARN BASIC DIGITAL SKILLS?

Every Friday, 10am-12pm, Platform Housing's wonderful digital champions help run an informal, friendly drop-in at Matlock's Imperial Rooms.



Most younger people have a good understanding of all things digital, but for too many older people, it's about as clear as mud and very frustrating!

The patient volunteers are understanding of different needs and help people who feel left behind by the digital world.

People often join because they need to learn how to do something specific such as to make an online application, sign up to Platform Housing's customer portal or buy something online, along with other common requests like help with texting, emails, changing phone settings, photos and using social media. The volunteers help with all of that and more.

They also run sessions on staying safe online and signing up to the NHS App.

You don't need high level digital skills or qualifications to help people use their phone or other digital device. You just need to be friendly, patient, a clear communicator, and willing to help people learn the basics. Volunteering at Matlock Help Centre where everyone is welcomed is a truly rewarding role and you will be well looked after by staff.

If you would like to talk about becoming a Platform Housing Digital Champion volunteer, please email Digital Empowerment Officer: Hayley.beresford@platformhg.com Or feel free to drop in one Friday for a cuppa to get a feel for what we do.

Platform Housing customers are always welcome to drop-in to speak to a Platform staff member while the digital session is on, for help to report repairs, raise any issues, and signpost you to other organisations if you need help.



Scouts

Due to a kind donation from both Darley Dale Town Council and local District Councillors (through the Local Projects Fund) we were able to have a new handwashing sink installed. This has reduced the time spent queuing which enables more time to be spent on fun activities.

Another grant - this time from UKSPF has enabled the whole hall to be insulated by local company Jet Joinery. Due to an extremely kind donation from Markovitz a much larger area than originally proposed was able to be covered making the hall not only look amazing but also warmer in winter and cooler in summer which the youngsters and leaders will really appreciate.

We are holding a Summer Fayre fundraiser on Saturday 15th August in the afternoon. It is shaping up to be a great event with a bar, hog roast, Viking village, inflatables and much, much more. Admission is free and everyone is welcome.

This year we will celebrate our 80th birthday which is a wonderful achievement. We are collecting oak trees to plant in the Church field opposite the Scout Hut and have a couple of events planned including a picnic for the youngsters and their families and a more formal tree planting event in the autumn.

The group is at maximum capacity for young people until next January when we will have space for four 6-year-olds in Beavers. Adult helpers are always welcomed whether as weekly section Leaders, Trustee Board members or just to help with maintenance of the premises - please get in touch if you can help out (glv@darleydalescouts.co.uk).

Darley Dale Croquet Club 2026 Season

The new season of croquet has started in Whitworth Park - our Club days are Friday, Saturday and Sundays throughout the summer months, with the majority of our games being played in the afternoon. If you feel you would like to give it a try, the Club offers a free session/game to see if croquet is for you - coaching will be given.

We also offer "Hosting Evenings" for groups/organisations who are looking to arrange an evening of entertainment. Members of our Club are available to offer coaching; the session can last as long as you wish and has proved in the past to be very enjoyable.

All equipment is provided so do come along and give croquet a try, you'll be amazed as to how addictive/challenging the game can be.

For more information, please contact:
ddcroquetgt@gmail.com

DARLEY DALE METHODIST CHURCH INVITES YOU TO...

Forget-Me-Not Club

Every Friday 9:30am-11:30am in the Church Hall. A friendly, welcoming group for people with memory difficulties and their carers. Refreshments, activities, music, conversation and reflection time. For more details contact Alison Wood: cameo.mdmc@btinternet.com

Memory Church

This short worship service takes place on the 1st & 3rd Wednesday afternoon of each month from 2:00pm-2:30pm followed by refreshments. The service will include two hymns, prayer, a Bible reading and short reflection. This service is particularly suitable for people with memory loss and their carers but all are welcome. Phone Anne for more details on 07599 298793.

Forest Church

Come and join us for a walk in the woods. Every first Sunday of the month meeting at 2pm. A time to explore the woods, meet new people and praise God in his creation. You will need shoes with some grip and also bring clothes suitable for the great outdoors. Paths will sometimes be uneven. Phone Anne for more details on 07599 298793.

Sunday Morning Worship

10:30am in the Church. A time of worship including hymns, prayers and a message followed by refreshments and a chance to chat.

Sunday Club (for children and families)

Every 4th Sunday of the month 10:30am-11:30am. Families join in the start of worship in the church and then go into the hall for a story and activities and back into church at the end to show what they have done to the congregation.

Joyful Noise Playgroup

Mondays during term-time 9:30am-11:30am in the Church Hall. A warm welcoming group for babies, toddlers, pre-school children and their parents, grandparents or family friend to explore faith together through songs, story and play. For more details contact Hannah on 07359 778505.

Evergreen Club

Every Tuesday 2:00pm-4:00pm in the Church Hall. A group which meets to enjoy time together with a variety of activities and speakers and the opportunity to chat. All welcome.

CAMEO Group

Every 2nd and 4th Wednesday each month from 10:00am-12:00pm. Support and a social space for people looking for company, including those who have recently lost a loved one. Chat, play games and enjoy good company.

Lunch Club

Thursdays 10:45am-1:30pm. Lunch at 12:00pm in the Church Hall. Two groups meet on alternate weeks to enjoy a chat and a meal together. The Community Transport minibus is used to bring some of those who need transport. For more information phone Monica on 01629 732935.

Two Dales, Matlock

Tasty Family Bakes

Fresh Homebaked Treats

Cupcakes • Brownies • School Cake • Banana Bread

Perfect for School Events, Parties, Baby Showers, Care Homes, Office Treats, Gifting & Welcome Treats for Holiday Cottage Guests

LAUNCHING 25TH MAY

25% OFF YOUR FIRST ORDER

✓ Pre-Order ✓ Collections ✓ Delivery

To claim your discount & see the menu to order:
Scan the QR code or text "LAUNCH" to 07518321482

tastyfamilybakes tastyfamilybakes

Major upgrade for one of Derbyshire's most historic schools

ONE of the smallest schools in the county is set for a major transformation after securing more than £220,000 to upgrade its facilities and extend its age range.

Darley Churchtown Church of England Primary School, on the edge of the Peak District, will benefit from £220,970 secured through a Section 106 developer contribution, aimed at enhancing facilities and supporting the long-term future of the historic village school.

The funding, paid to Derbyshire County Council in 2023, will be used to modernise the school and to open a 12-place nursery, allowing children as young as three years old to attend.

Plans for the project include a wide range of improvements to both indoor and outdoor spaces. These will see the refurbishment of infant toilets and cloakrooms, upgrades to classrooms and the creation of new dedicated spaces for inclusion support and a school library.

The school hall will also be enlarged to better accommodate collective worship, physical education and lunchtime activities, while early years pupils will benefit from a resurfaced outdoor area and the addition of canopies to provide shade and shelter.



Further works will include improved accessibility and security measures, upgraded flooring and lighting, and energy-efficient LED installations throughout the building.

An unused classroom will be converted into a sensory room for high level need children while improvements to the exterior of the school building will improve security.

Headteacher Tom Lloyd said the investment would help bring the school in line with modern educational standards while preserving its historic character, with parts of the building dating back to 1848.

New Nursery opening at Darley Dale Primary

Darley Dale Primary School is set to open its new on site nursery in September 2026, offering 30 places for children aged 3-4. The nursery will be led by the much admired early years practitioner and teacher Mrs Gemma Chapman, whose return to the school has been warmly welcomed.

The nursery will make the most of the school's beautiful grounds, including its woodland area and generous outdoor spaces, creating a calm and engaging environment where children can grow in confidence and curiosity. A smooth transition into Reception is a key feature, with shared routines and familiar staff



helping children feel at home from the very beginning.

Headteacher Sarah Hudson says the development marks "a hugely exciting step" for the school, while Gemma looks forward to offering thoughtful, purposeful early years experiences in a setting she knows well.

To enquire about a place, visit the Parents page on the school website and click on Nursery, or contact the school office on 01629 732226 or info@darleydale.derbyshire.sch.uk

DARLEY DALE COMMUNITY RADIO

LOCAL VOICES, SHARED STORIES, GREAT MUSIC!

Tom Peet: The Voice of Sport

Let's meet Tom Peet, sports presenter at Darley Dale Community Radio (DDCR).



Tom's presenting enthusiastic and deep-rooted knowledge of local sport covers a wide range of news features and weekend fixtures and results from clubs in the surrounding area.

Tom joined DDCR after working in local radio in Chesterfield. His broadcasting background began at Derby University where he became a regular on student radio. With a particular interest in sports, coverage of local teams seemed to be the perfect fit.

The Tom Peet Show covers Bowls, Clay and Croquet which takes place at Whitworth Park, Clay Pigeon Shooting, he ventures a little further along the A6 to cover Matlock Town FC and the Matlock Rugby teams, Tom now covers the new Matlock Water Polo Team and of course during the summer months its Cricket with the Darley Dale Cricket Club teams.

Don't forget, you can see Tom LIVE at the Gig in the Park at The Whitworth on Sunday 30th August!

Catch The Tom Peet Show every week on www.ddcr.co.uk. Every Game, Every Sport, Every Week!

THE FRIENDS OF MATLOCK FOREST



The Friends of Matlock Forest have a walk on Sunday 14th June, meet at 2:30pm at the entrance to Farley Wood. This will be led by Mosses expert Andrew Hodgson. No charge, donations welcome.

Come and find out about this fascinating subject, enjoy a walk in the fresh air and hear about our lovely wood! Keep an eye on the website (www.savematlockforest.org) for information about other activities which will include Art in The Forest in the next couple of months.

We have a small set of microscope type equipment for families to borrow for pond dipping. Not much around yet but will be very shortly! Our first walks leaflets 'A 2 mile walk to the Bronze Age Standing Stone' is now available in The Whitworth and Matlock Library. It's an easy (but wet!) walk through the woods.

Join Darley Dale Community Speedwatch Today!

We're looking for volunteers to help tackle speeding in our town.

What you'll do: Trained volunteers carry out high visibility speed checks at approved sites. Details of speeding vehicles are passed to the CSW Team, who issue advisory or warning letters to registered owners.

Why it matters:

- Reduces speeding in problem areas
- Provides evidence for police and enforcement
- Gives residents a direct role in keeping our roads safe

As a volunteer led scheme, it sends a clear message: Our community won't tolerate speeding.

Please email: townclerk@darleydale.gov.uk



New Home Buyer Survey Analysis

Darley Dale Town Council has surveyed residents living in new housing developments to understand how the town is functioning in practice. The results are clear and will help inform the District Council with housing allocation decisions for Darley Dale in the Local Plan Review which is currently under way.

Only around 16% of respondents work within Darley Dale, with the vast majority travelling elsewhere for employment. Of those in work, most commute out of the town, over half rely on car travel, and no respondents reported using public transport. In addition, a substantial proportion of residents are retired, and very few moved to Darley Dale for employment reasons.

This evidence shows that Darley Dale is not operating as a self-contained settlement where people both live and work locally, which is how the District Council currently designates it. Instead, it is functioning primarily as a commuter and retirement location.

These findings provide important evidence and must be properly considered in decisions about the scale and justification of future housing growth in Darley Dale. Residents are encouraged to share their views as the Local Plan Review discussions continue. Please feel free to email us at: townclerk@darleydale.gov.uk

Grateful Thanks from Open Door at St Helen's Church



The funding of £1,000 provided by Darley Dale Town Council has enabled the Church to install a new audio/visual system, which will make a real difference to how we welcome and include people. The system will allow church services to be heard clearly from the church hall - especially helpful for families with young children. It will also allow us to offer a live stream of services for those who are housebound, ensuring they remain part of our church community.

Looking ahead, the church also hopes to use this equipment to set up a small film club, creating another opportunity for people to come together. We are truly grateful for your support and for recognising the value of what we do.

LOOKING BACK..

BY KEITH DOWNING

Stancliffe Estate formed part of the King's manor of Darley and likely came into Thomas Columbello's ownership through marriage in 1370. His grandson Humphrey is the first known family member to live at Stancliffe, probably building the first hall around 1520. The house changed hands several times before Sir Paul Jenkinson bought it in 1700 and rebuilt it using stone from the on site quarry. After further ownership changes, Philip Hubbersty sold the estate in 1855 to Manchester industrialist Joseph Whitworth.

Whitworth initially let the house to lawyer Charles Lister, but by the late 1850s he began reshaping the estate. He extended the hall, commissioning T. Roger Smith to create a new stone frontage using quarry stone. Edward Middleton Barry, architect of the Royal Opera House, designed the distinctive West Lodge on today's A6. Barry continued enlarging the hall while William Barron & Sons landscaped the park and Joseph Dawson, a pupil of Sir Joseph Paxton, designed the ornamental gardens. Local horticulturalist James Smith carried out the work, with locals joking that Whitworth had "turfed the park with banknotes."

The original road to Darley Hillside once ran directly in front of the house through the stone gateposts and along what is now the private drive off Whitworth Road towards Bent Lane. Whitworth rerouted it to the present Whitworth

Road and enclosed the park behind the now listed stone walls. The main entrance was moved to West Lodge, with a sweeping carriage drive through the gardens. The hall was supplied by extensive kitchen gardens at today's Highlands, linked by a tunnel under Whitworth Road, and Whitworth also built a farm at the bottom of Whitworth Road where Molyneux industrial park now stands.

Lady Whitworth lived at Stancliffe Hall until her death, after which the estate was broken up and the quarries expanded by the new owners, the Stancliffe Stone Company. They considered turning the hall into a hotel, but in 1899 the Rev. Ernest Owen bought it to establish a boys' boarding school. He adapted the building, opened with 50 pupils, and added a wooden chapel in 1902 based on a Swedish design. The school later developed extensive sports facilities, including its own golf course. The school ran for just over a century but struggled in the late twentieth century, closing in July 2001 and leading to the sale of the hall and its contents. The hall appeared as Barney's grandparents' home in the 2001-02 film *Stig of the Dump*.

After the sale, the hall became a luxury wedding and events venue until the end of 2022, when it was sold again. It is now a luxury holiday let for up to 18 guests, used for large groups and family gatherings.